

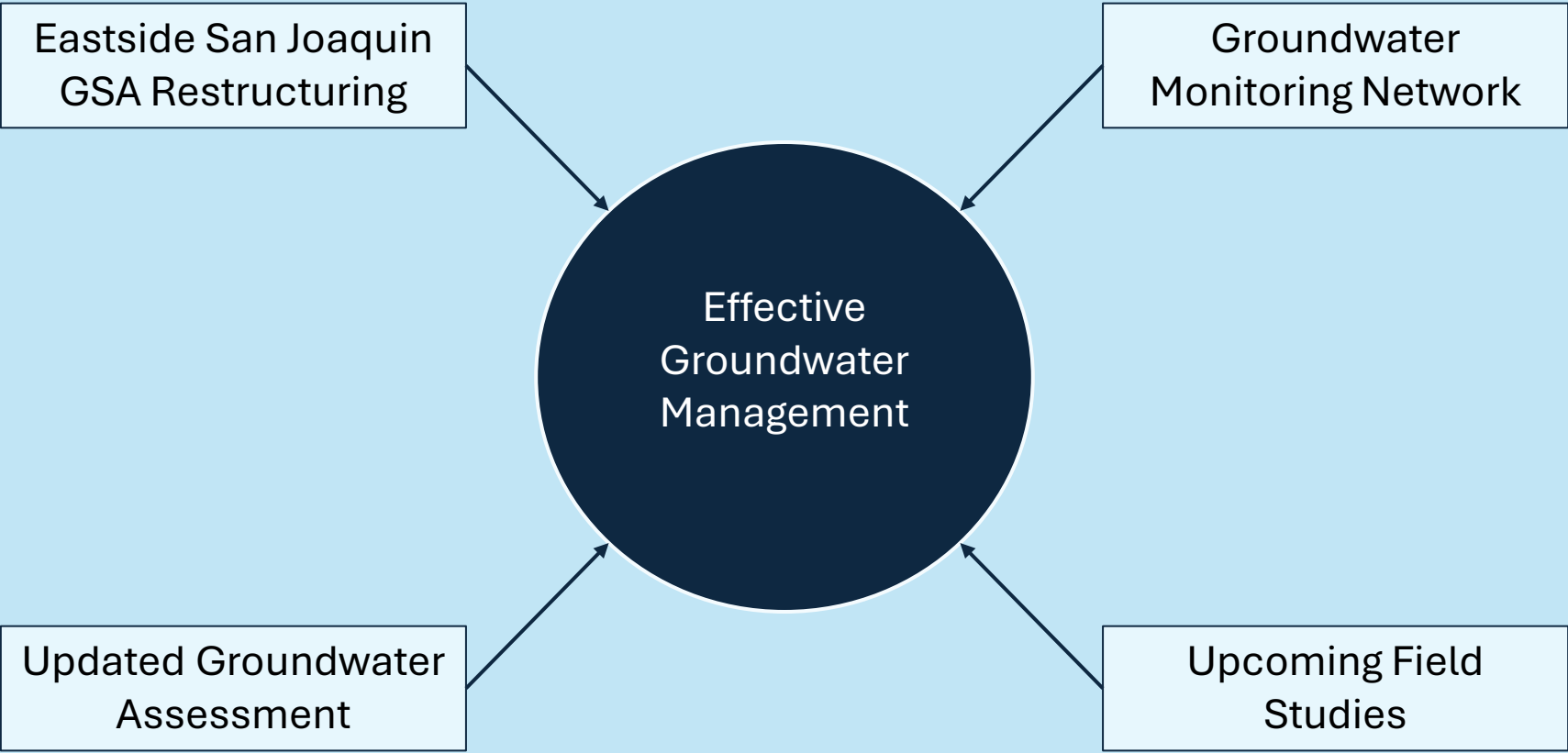
A photograph of a wellhead in a rural field. The wellhead is a vertical structure with a red and white top section and a yellow lower section. A large, brown, horizontal pipe extends from the wellhead to the right, with a thick stream of water flowing out of its end. The wellhead is surrounded by tall grass and a dirt path. In the background, there is a green field, a utility pole, and a barn under a clear sky.

Calaveras County Water District

Groundwater Updates

CCWD Groundwater Updates

October 22, 2025



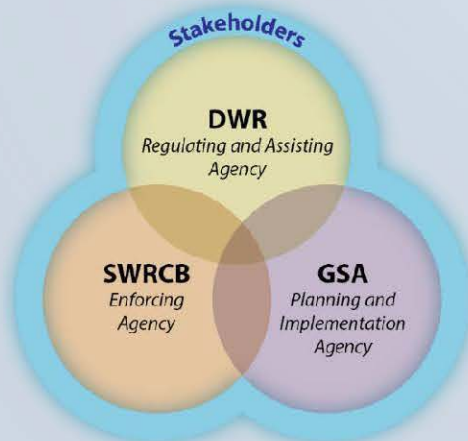
Sustainable Groundwater Management Act (SGMA)

Local Control



“A central feature of these bills is the recognition that groundwater management in California is best accomplished locally.”

Governor Jerry Brown, September 2014

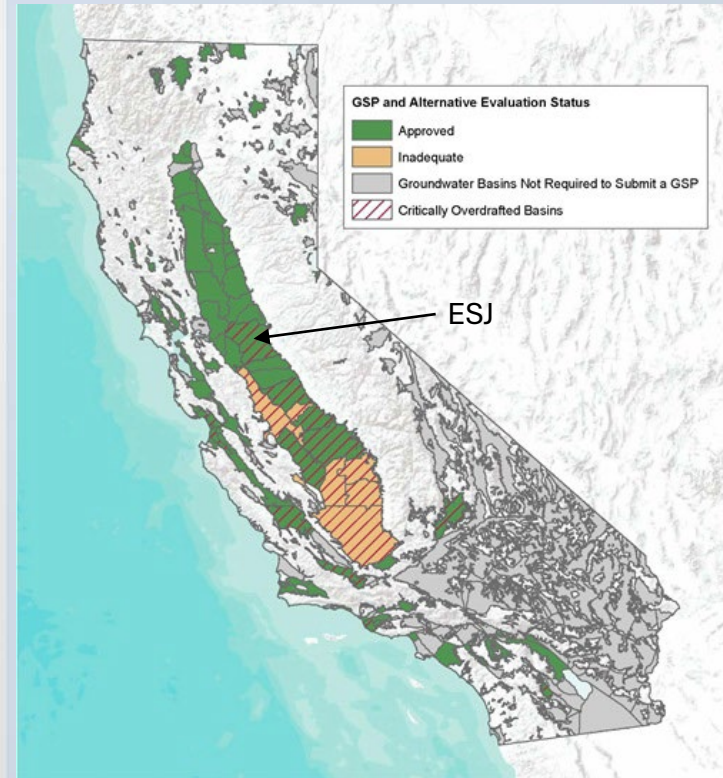


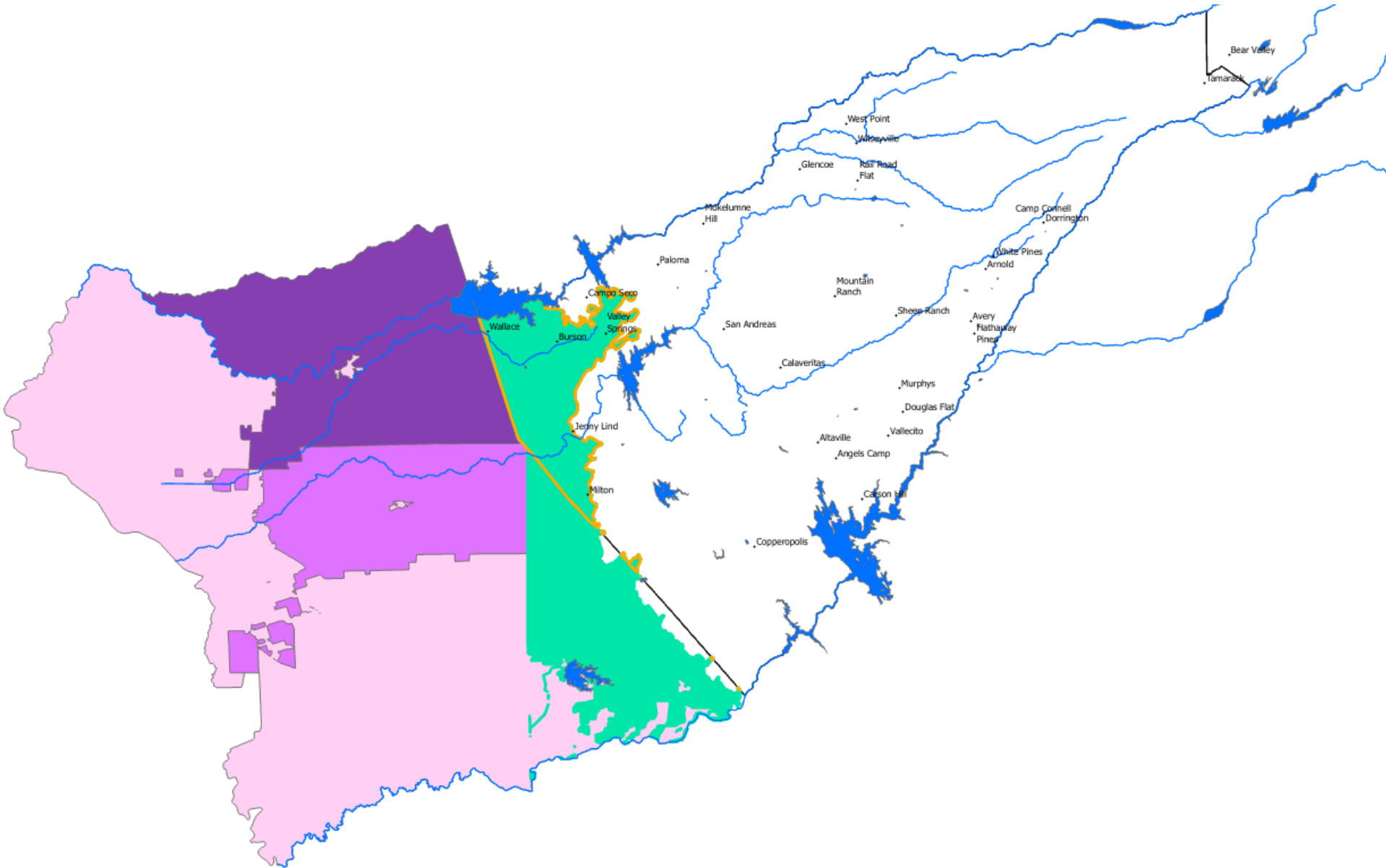
Sustainability

Avoid Six Undesirable Results

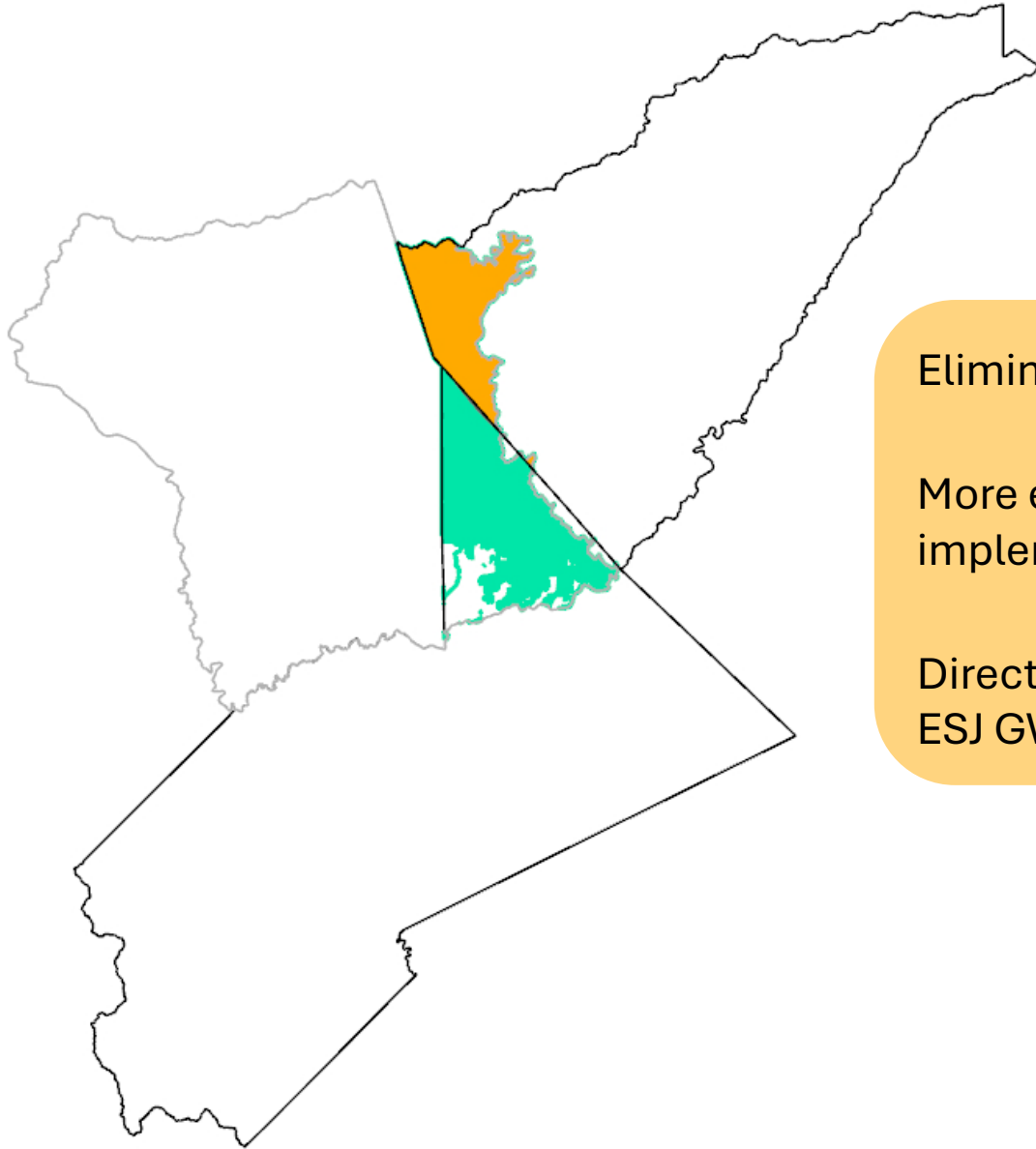


Lowering GW Levels Reduction of Storage Seawater Intrusion Degraded Quality Land Subsidence Surface Water Depletion





Create Calaveras GSA



Eliminates multi-county GSA challenges

More efficient governance and plan implementation

Direct coordination with Calaveras County, ESJ GWA, and other GSAs.

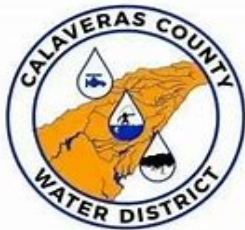
Next Steps

Take Calaveras GSA item to County Board of Supervisors on October 29th

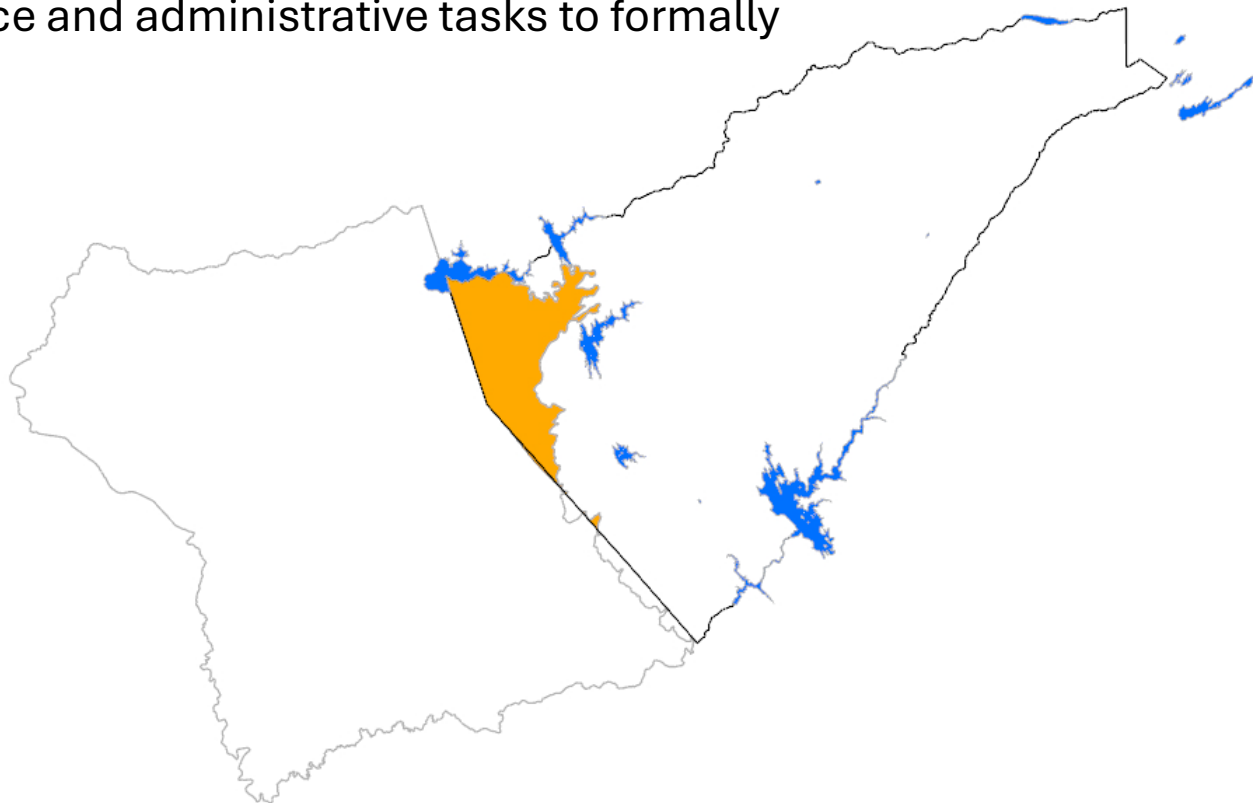
Coordinate with Calaveras County, Stanislaus County, and Rock Creek Water District

Meet with DWR to convey plans to restructure GSA

Work through local governance and administrative tasks to formally form the Calaveras GSA



**EASTERN SAN JOAQUIN
GROUNDWATER AUTHORITY**



Updated Groundwater Assessment

TECHNICAL MEMORANDUM
GROUNDWATER CHARACTERISTICS
AND RECHARGE IMPLICATIONS
NEAR LAKE CAMANCHE AND VALLEY SPRINGS,
CALIFORNIA

PREPARED FOR

CALAVERAS COUNTY WATER DISTRICT

PREPARED BY:

DUNN ENVIRONMENTAL, INC.
5060 Robert J. Mathews Pkwy, Suite 2
El Dorado Hills, CA 95762

DE Project No.: 154-01



June 2013
Revision 0

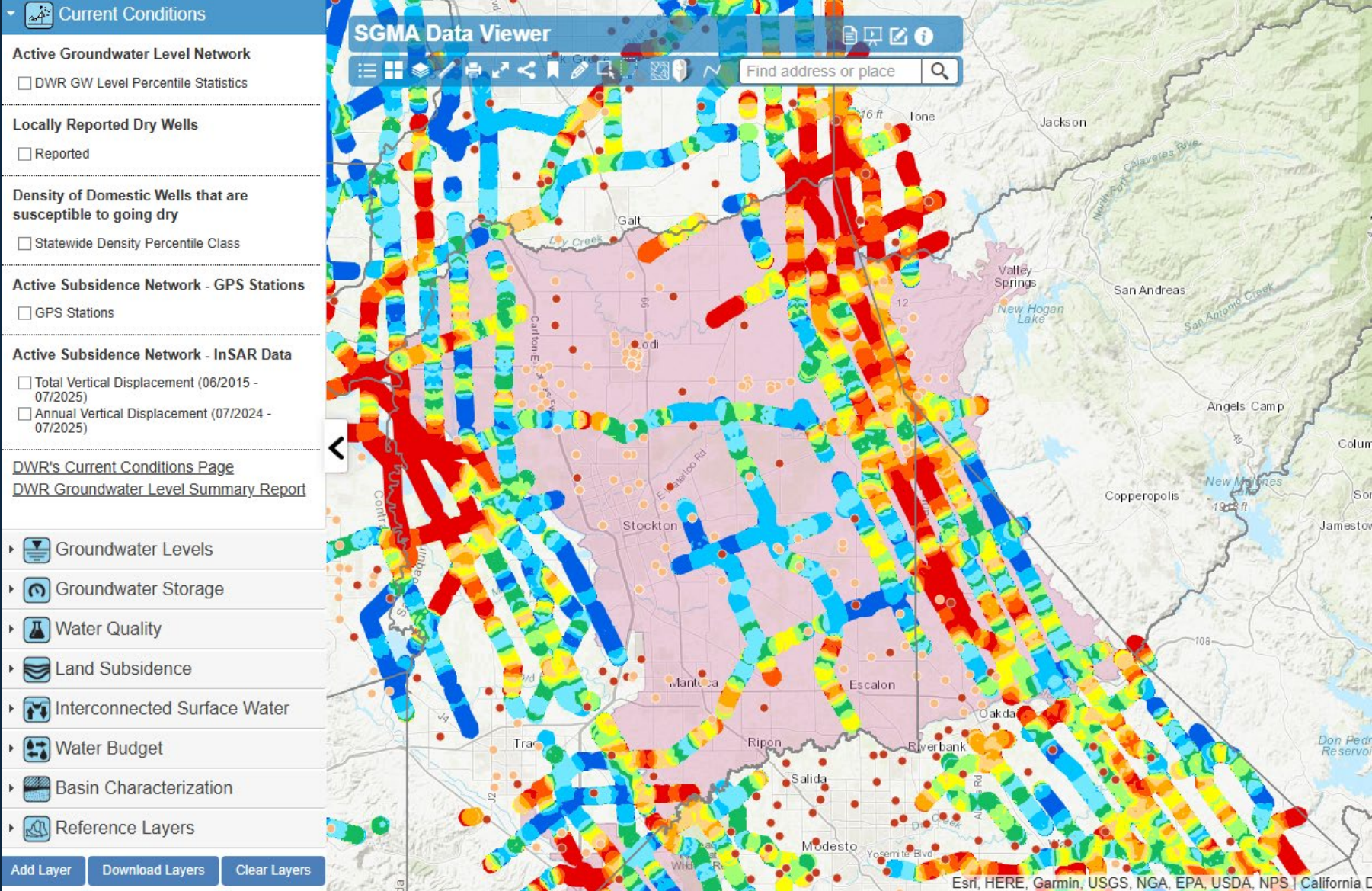
**Last comprehensive groundwater assessment:
2013 prior to SGMA**

Key findings from Dunn memo:

- Shallow geology restricts surface water percolation to deeper aquifers
- Water levels and storage continue to decline
- Radiometric dating shows groundwater is old meaning slow recharge and long flow paths
- Ultimately, surface-based recharge options are limited across most of the area

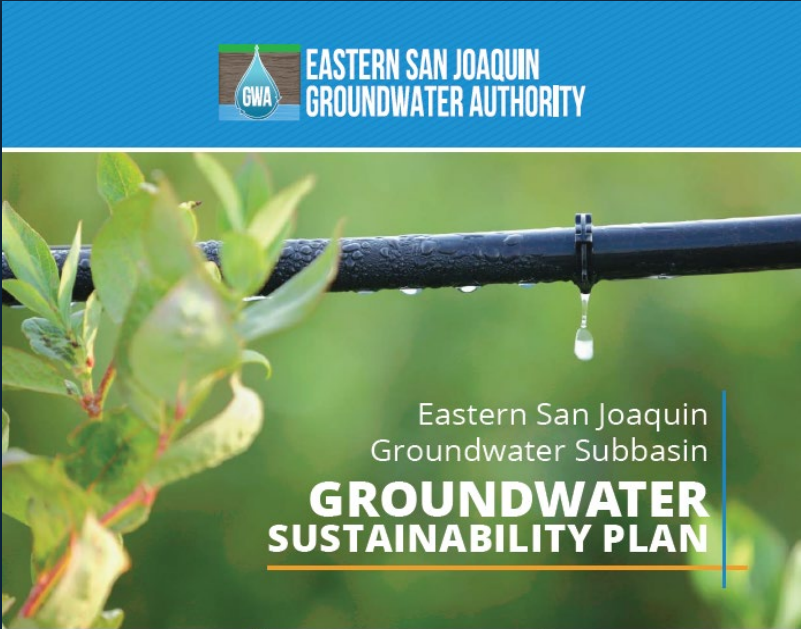
Updated Groundwater Assessment


Since 2013 a wealth of resources and data have been made available.



Updated Groundwater Assessment

The ESJ GWA submitted initial GSP in 2020, revised the GSP in 2022, and submitted an amended plan in January 2025.



 **EASTERN SAN JOAQUIN
GROUNDWATER AUTHORITY**

Eastern San Joaquin
Groundwater Subbasin

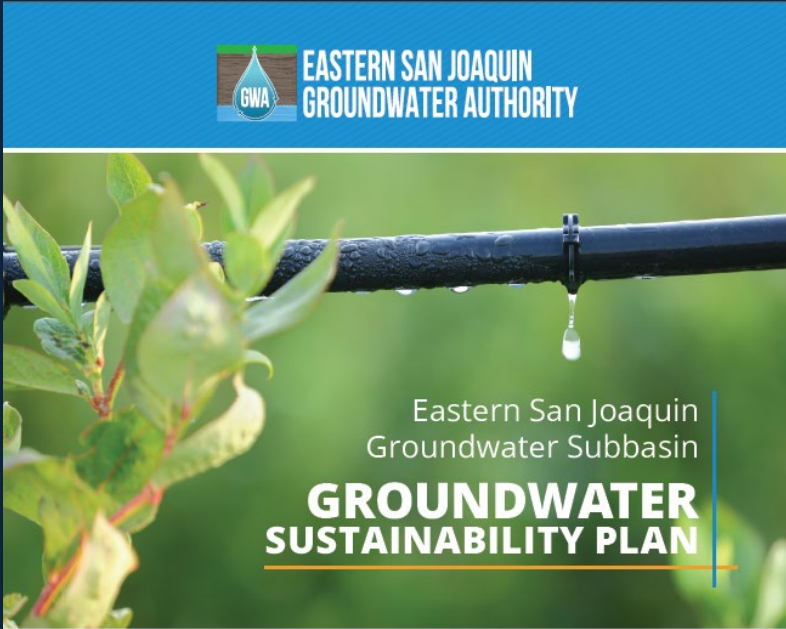
**GROUNDWATER
SUSTAINABILITY PLAN**


This cover features a blue header with the ESJ GWA logo and title. The main image shows a black drip irrigation pipe with a single drop of water falling from it, set against a background of green leaves. The title is centered in the lower half of the image.



November 2019;
revised June 2022

This collage includes a solid orange square, a landscape photo of a river at sunset, a photo of hands writing on a document, a photo of a vineyard at sunrise, and a solid blue square.

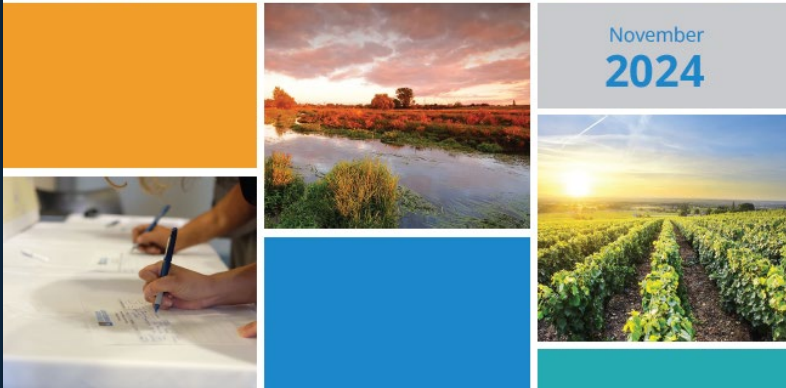


 **EASTERN SAN JOAQUIN
GROUNDWATER AUTHORITY**

Eastern San Joaquin
Groundwater Subbasin

**GROUNDWATER
SUSTAINABILITY PLAN**

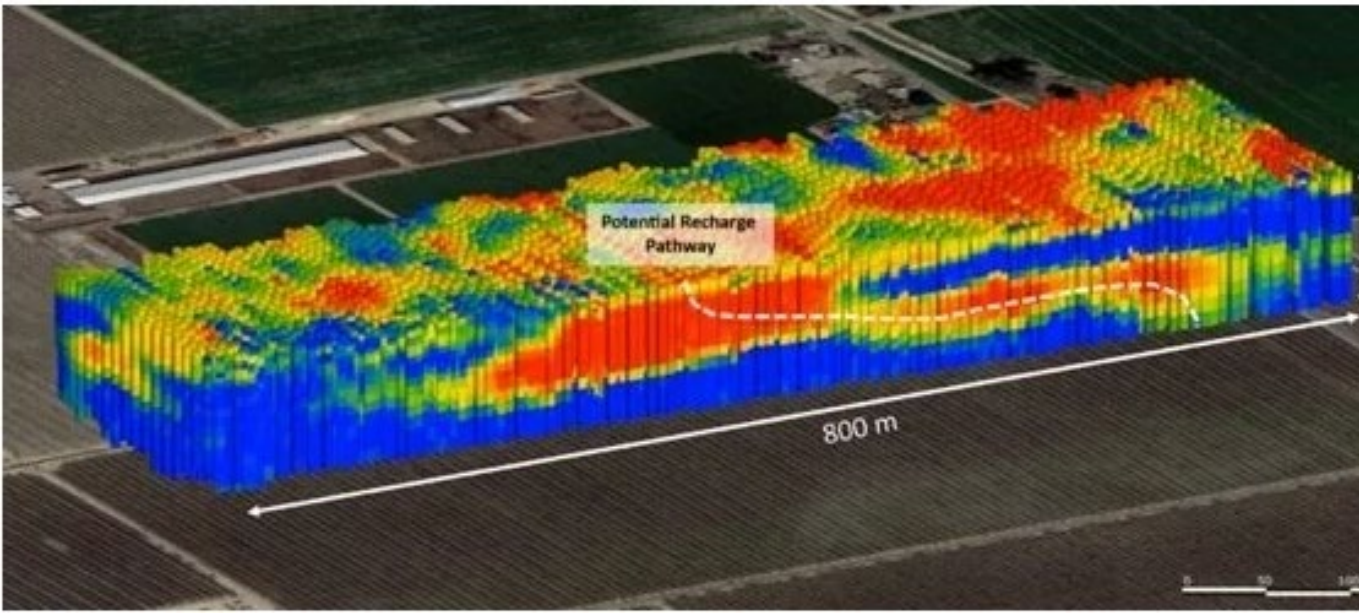
This cover is identical in design to the 2022 version, featuring the same header, main image, and title.



November
2024

This collage is identical in composition to the 2022 version, but the date text is updated to 'November 2024'.

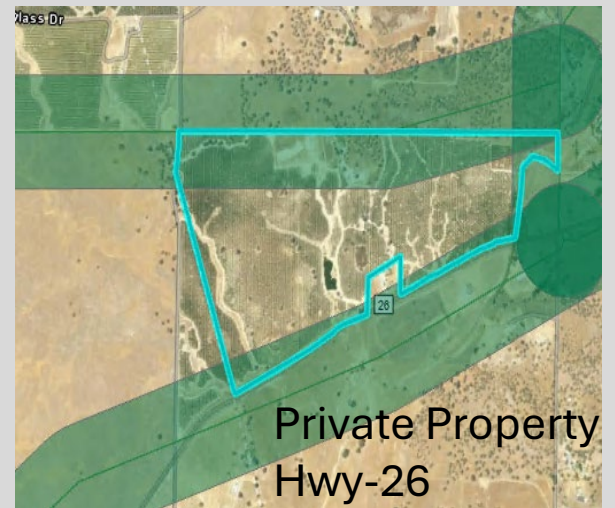
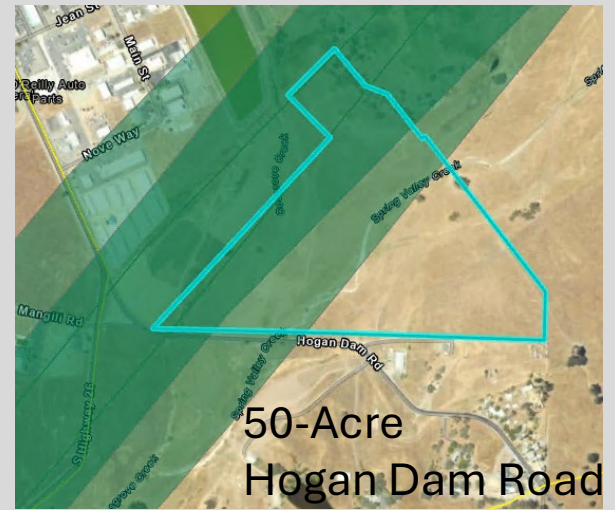
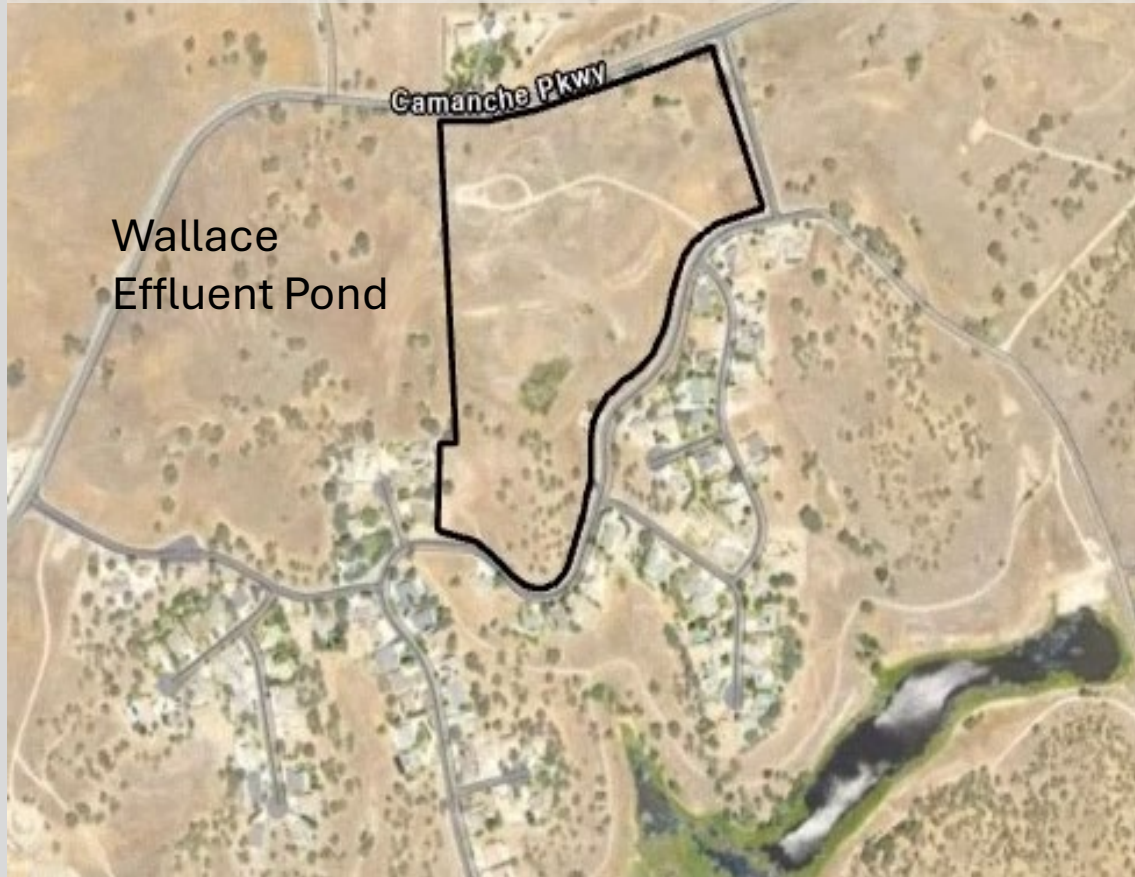
DWR Basin Characterization



Towed Geophysical System

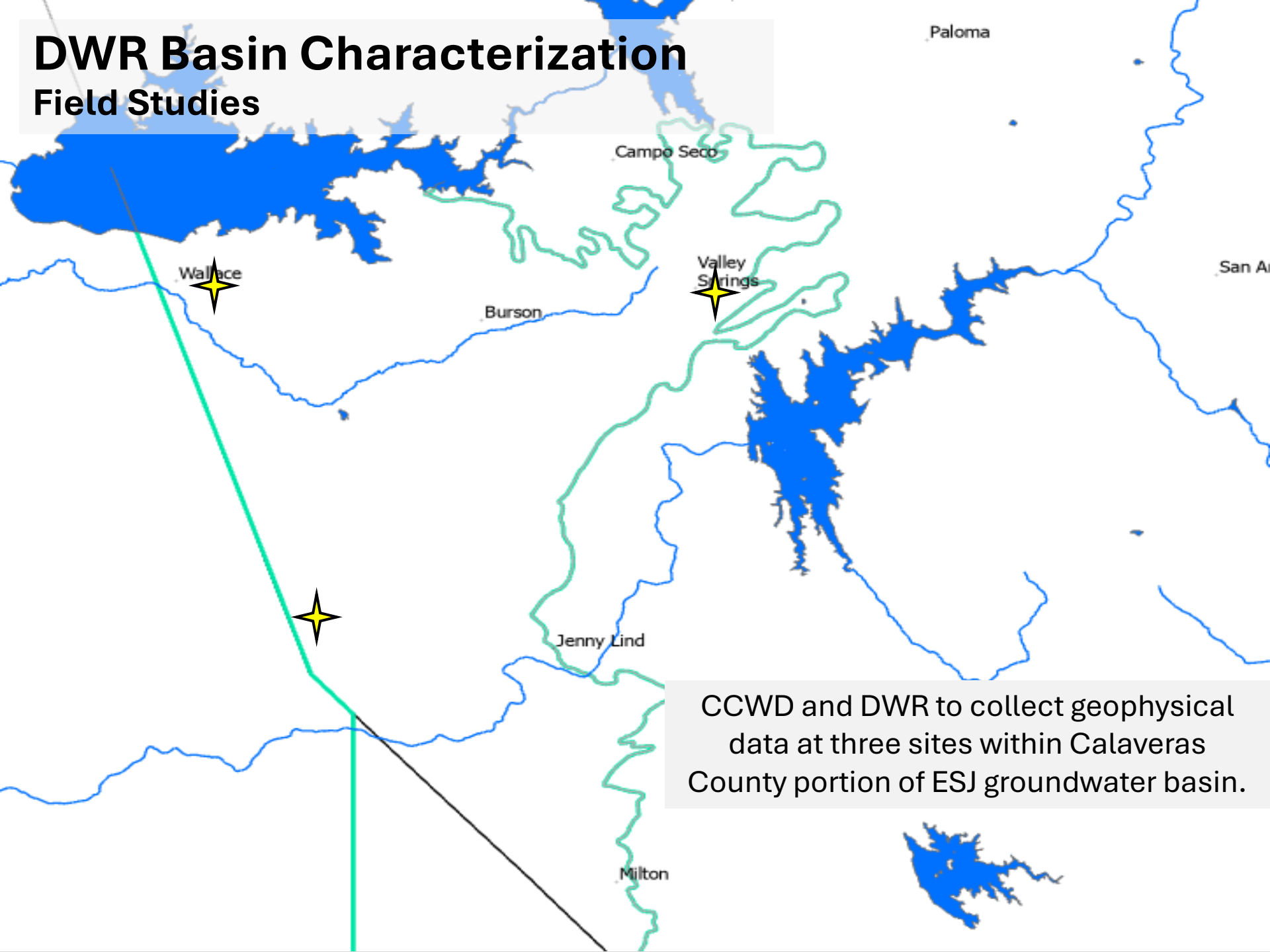
Collects electrical resistivity of the subsurface up to 350 below ground surface

DWR Basin Characterization Field Studies



CCWD working with DWR to collect geophysical data at three sites within Calaveras County portion of ESJ groundwater basin.

DWR Basin Characterization Field Studies



CCWD and DWR to collect geophysical data at three sites within Calaveras County portion of ESJ groundwater basin.

Summary

- Take the GSA item to the County Board of Supervisors and continue to coordinate with local partners to make administrative changes
- Work with Woodard & Curran to develop the datasets and analysis for the updated groundwater assessment
- Revisit access agreements for USGS wells and work with GWA to incorporate other wells into the monitoring network
- Continue to develop the field studies with DWR to collect geophysical data at three sites in the County

**That's all for now.
Thanks.**

