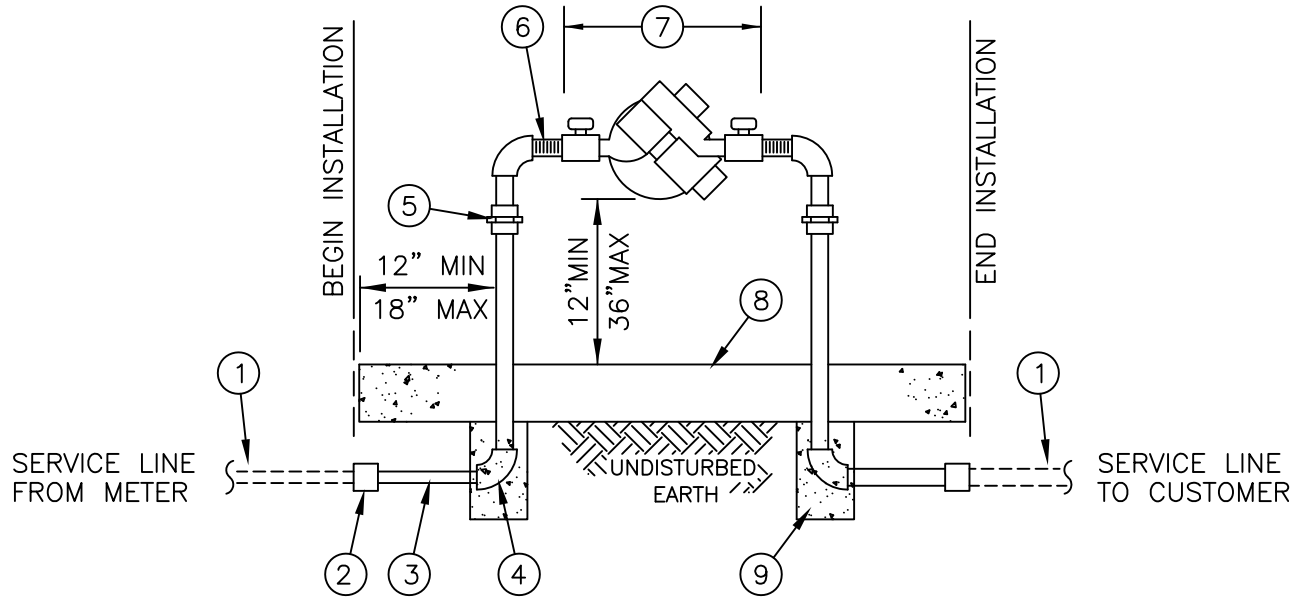


**BACKFLOW PREVENTION ASSEMBLY
ON CUSTOMER PROPERTY
AFTER METER**



NOTES:

1. REDUCED PRESSURE PRINCIPLE ASSEMBLIES SHALL BE PER CCWD APPROVED LIST AND INSTALLED SO AS TO BE READILY ACCESSIBLE FOR INSPECTION, REPAIR AND TESTING.
2. SERVICE WILL REMAIN LOCKED UNTIL THE DEVICE HAS BEEN INSPECTED, TESTED AND APPROVED BY THE DISTRICT.
3. PIPING AND BACKFLOW DEVICE SHALL BE THE SAME SIZE AS SERVICE METER.
4. DRAINAGE SHALL BE PROVIDED WHEN ENCLOSURE IS INSTALLED.
5. CUSTOMER OWNS AND IS RESPONSIBLE FOR INSTALLATION AND MAINTENANCE OF BACKFLOW DEVICE IF REQUIRED. CCWD RESPONSIBILITY AND/OR MAINTENANCE ENDS AT METER.
6. NO TIE-INS ALLOWED BETWEEN WATER METER AND BACKFLOW DEVICE.
7. FREEZE PROTECTION (HOT BOX) REQUIRED FOR BACKFLOW DEVICE ABOVE 2000 FT. ELEVATION.
8. NO OTHER UTILITIES OR PIPELINES ALLOWED WITHIN BACKFLOW PREVENTER INSTALLATION AREA.
9. ALL BRASS PIPE & FITTINGS SHALL BE NSF-61 APPROVED.

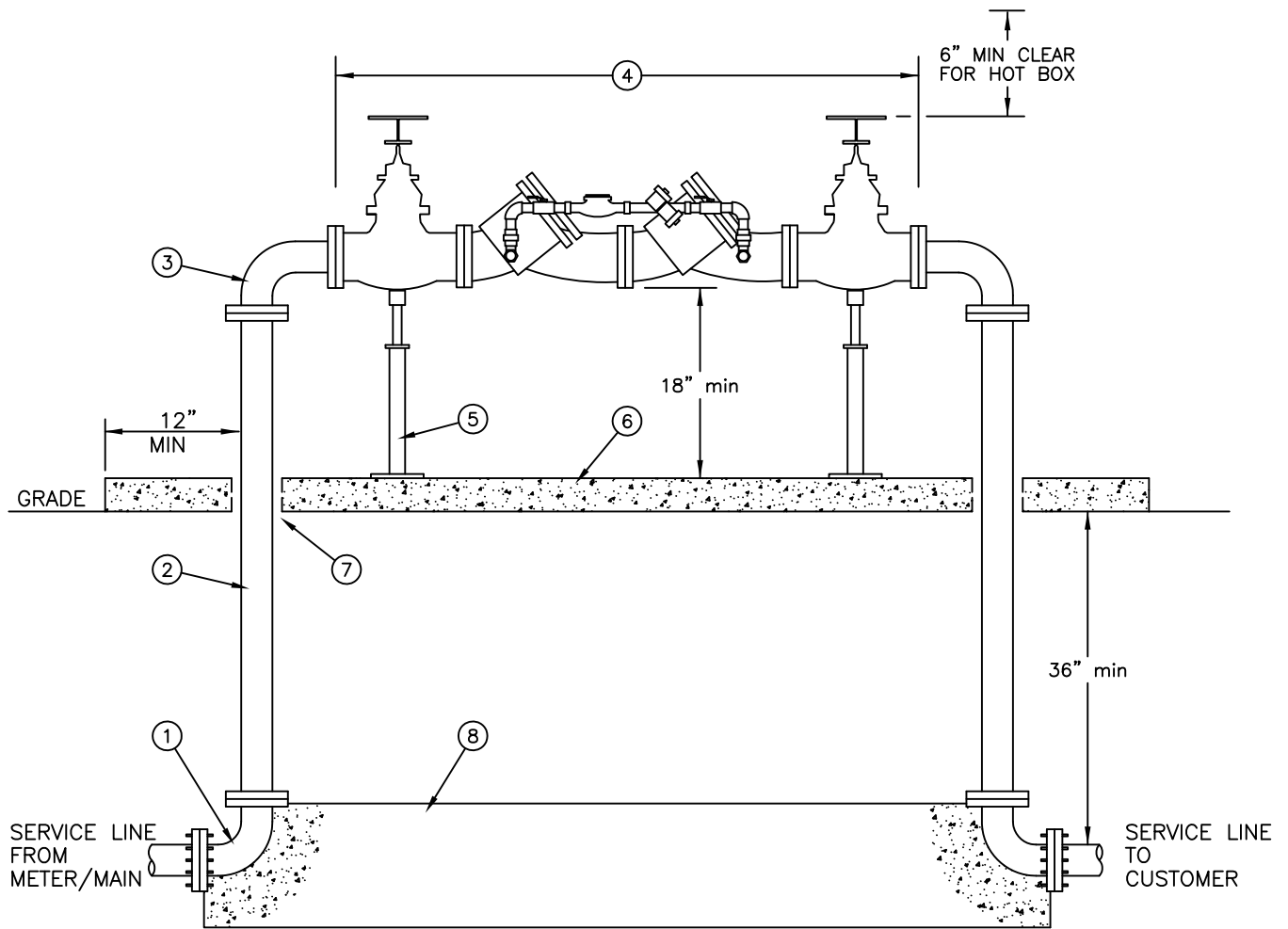
ITEM #	DESCRIPTION
①	SERVICE LINE FROM METER & TO CUSTOMERS HOUSE
②	BRASS COUPLING X MALE IPT (TYPICAL ALL)
③	BRASS PIPE (TYPICAL ALL)
④	BRASS 90° ELBOW X IPT (TYPICAL ALL)
⑤	BRASS UNION (TYPICAL ALL)
⑥	BRASS MALE X MALE IPT NIPPLE (TYPICAL ALL)
⑦	BACKFLOW PREVENTER ASSEMBLY
⑧	18" THICK CONCRETE PAD LENGTH VARIES PER SIZE
⑨	CONCRETE ANCHOR BLOCK, 1 CUBIC FOOT

CALAVERAS COUNTY WATER DISTRICT

**WATER DETAILS
BACKFLOW PREVENTION ASSEMBLY - 1" & 2"**

DRAWN BY: CCWD STAFF	SCALE: NONE	CCWD STANDARD DRAWING NO. W08
APPROVED: CHARLES PALMER	DATE: 09/2021	

F:\CCWD\1-ACAD_dwg\Details\Nov2007_Working_Stds\Final_Dec2008\Water\SD_W09A.dwg 20090320.0937



NOTES:

1. REDUCED PRESSURE PRINCIPLE ASSEMBLIES SHALL BE PER CCWD APPROVED LIST AND INSTALLED SO AS TO BE READILY ACCESSIBLE FOR INSPECTION, REPAIR AND TESTING.
2. SERVICE WILL REMAIN LOCKED UNTIL THE DEVICE HAS BEEN INSPECTED, TESTED AND APPROVED BY THE DISTRICT.
3. PIPING AND BACKFLOW DEVICE SHALL BE THE SAME SIZE AS SERVICE LINE.
4. DRAINAGE SHALL BE PROVIDED WHEN ENCLOSURE IS INSTALLED.
5. CUSTOMER OWNS AND IS RESPONSIBLE FOR INSTALLATION AND MAINTENANCE OF BACKFLOW DEVICE IF REQUIRED.
6. NO TIE-INS ALLOWED BETWEEN WATER METER AND BACKFLOW DEVICE.
7. FREEZE PROTECTION (HOT BOX) REQUIRED FOR BACKFLOW DEVICE ABOVE 2000 FT. ELEVATION.
8. NO OTHER UTILITIES OR PIPELINES ALLOWED WITHIN BACKFLOW PREVENTER INSTALLATION AREA.
9. FIELD PAINT ABOVE GROUND PIPING OSHA BLUE.
10. PROVIDE GUARD POSTS (G12) AS DIRECTED.

ITEM #	DESCRIPTION
①	90° BEND, MJxFL (TYPICAL ALL)
②	D.I. PIPING (TYPICAL ALL)
③	90° BEND, FL (TYPICAL ALL)
④	BACKFLOW PREVENTION DEVICE
⑤	PIPE SUPPORTS (TYPICAL ALL)
⑥	4" CONCRETE PAD
⑦	SLEEVE THROUGH CONCRETE PAD (TYPICAL ALL)
⑧	THRUST BLOCK

CALAVERAS COUNTY WATER DISTRICT		
WATER DETAILS		
BACKFLOW PREVENTION ASSEMBLY - 4" & 10"		
DRAWN BY: CCWD STAFF	SCALE: NONE	CCWD STANDARD DRAWING NO. W08A
APPROVED: CHARLES PALMER	DATE: 09/2021	

INSPECTION INFORMATION:

- CCWD will inspect water and sewer lines and connections, including trenching and backfill from within 2 feet of the building outward to CCWD’s water and/or sewer system within CCWD’s service areas.
- Inspections include all new construction and renovations involving building plumbing systems.
- CCWD Customer Service Department must be contacted at (209) 754.3543 to schedule an inspection.
- CCWD will inspect on business days only within 48 hours of advance notice provided to CCWD between the hours of 8am and 3:30pm Monday through Friday.
- Two inspection visits are included in CCWD’s regular fees applied to new services. CCWD shall bill property owner separately for inspection services beyond two trips to the property. Such additional visits will be billed at actual cost times the CCWD approved overhead rate.
- In the case of non-approval, CCWD will post a signed card at the building site, noting corrections or other work to be completed.
- CCWD Customer Service Department will send a written notice to the Calaveras County Building Department regarding the status of the inspection within two business days after completion of inspection and acceptance of the work.

BACKFLOW INFORMATION:

- Below you will see a list of approved backflow devices.
- The backflow device must be installed by, after installation tested by, then finally signed off by a State of California approved backflow tester prior to your water service being turned on.
- Backflow devices are required to be tested and certified a minimum of once a year, also by a State of California approved backflow tester. Confirm that the agent you hire to do this work is state certified and that their certification number is included on the testing results submitted to CCWD each year.

(The following list is from CCWD’s Construction Standards, *Approved Materials List – Water*)

	Type	Description	Manufacturer / Model
1.	Reduced Pressure Assembly	Reduced Pressure	1”-2” Febco / 825Y WATTS / 909
			4”-10” WATTS / 909RPDA, 957RPDA AMES / Colt C400
2.	Double Check Valve Assembly	Double Check	1”-2” WATTS / 719 FEBCO / 850
			4”-10” WATTS / 757 AMES / C200
3.	Double Check Detector Valve Assembly	Double Check Detector	4”-10” WATTS / 757DCDAOSY AMES / Colt C300OSY