



2025 Urban Water Management Plan Update



May 27, 2026

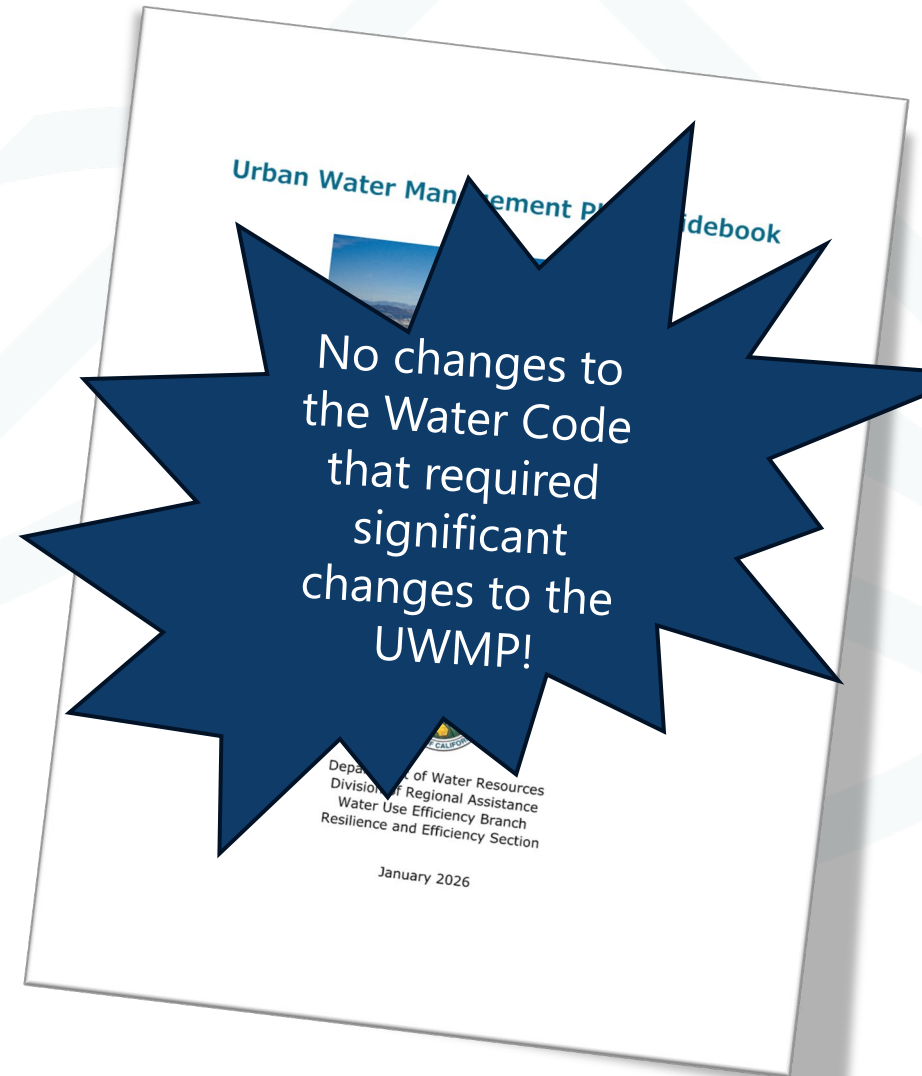


Agenda

1. Introduction to the UWMP
2. Public Outreach Process
3. Key Findings
4. Schedule
5. Questions

Urban Water Management Planning Act

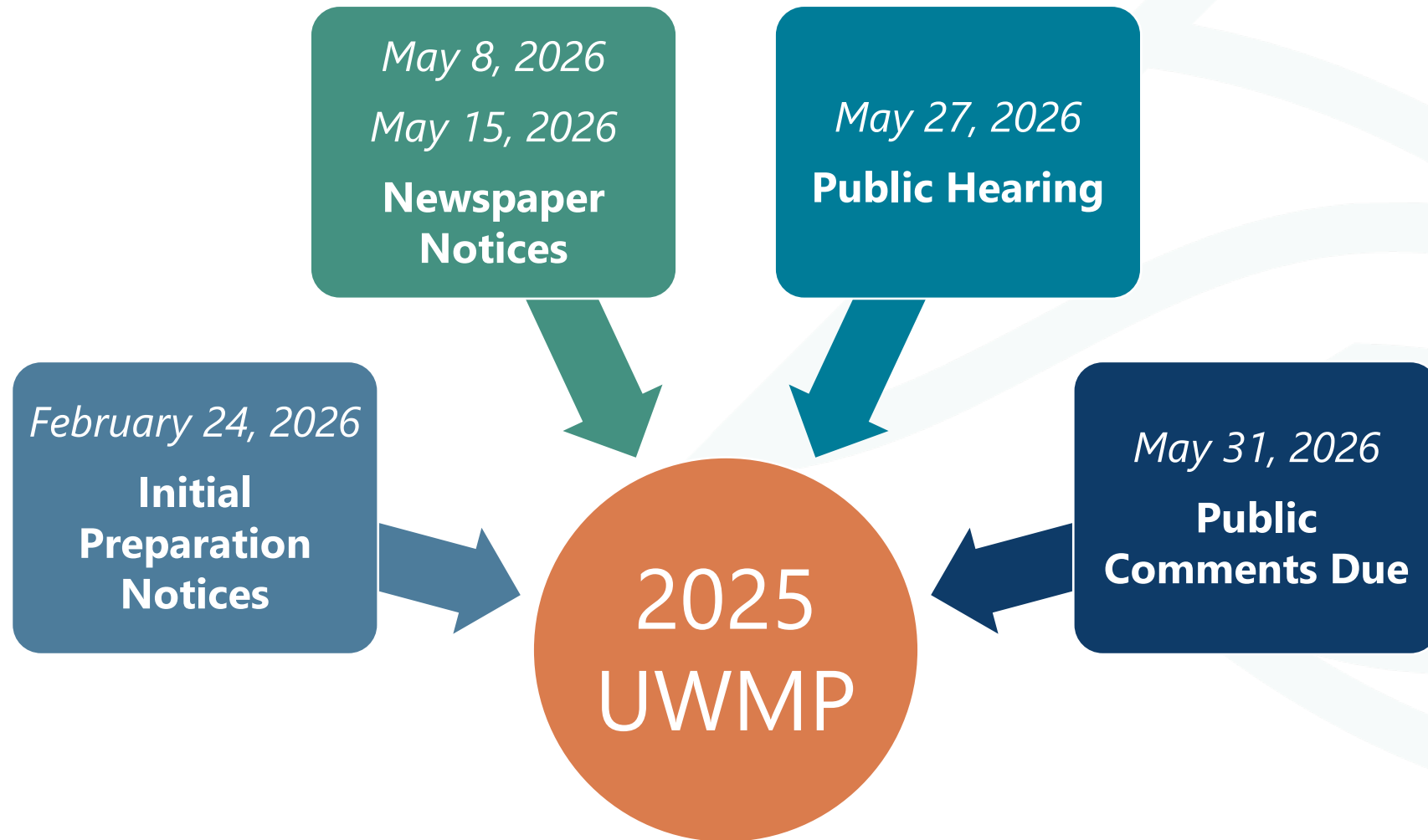
- Adopted 1983
- Required for State grants/loans
- Includes Water Shortage Contingency Plan
- Submitted every 5 years
- Requirements dictated by Water Code
- Department of Water Resources prepares Guidebook to inform UWMP development



Chapter Structure

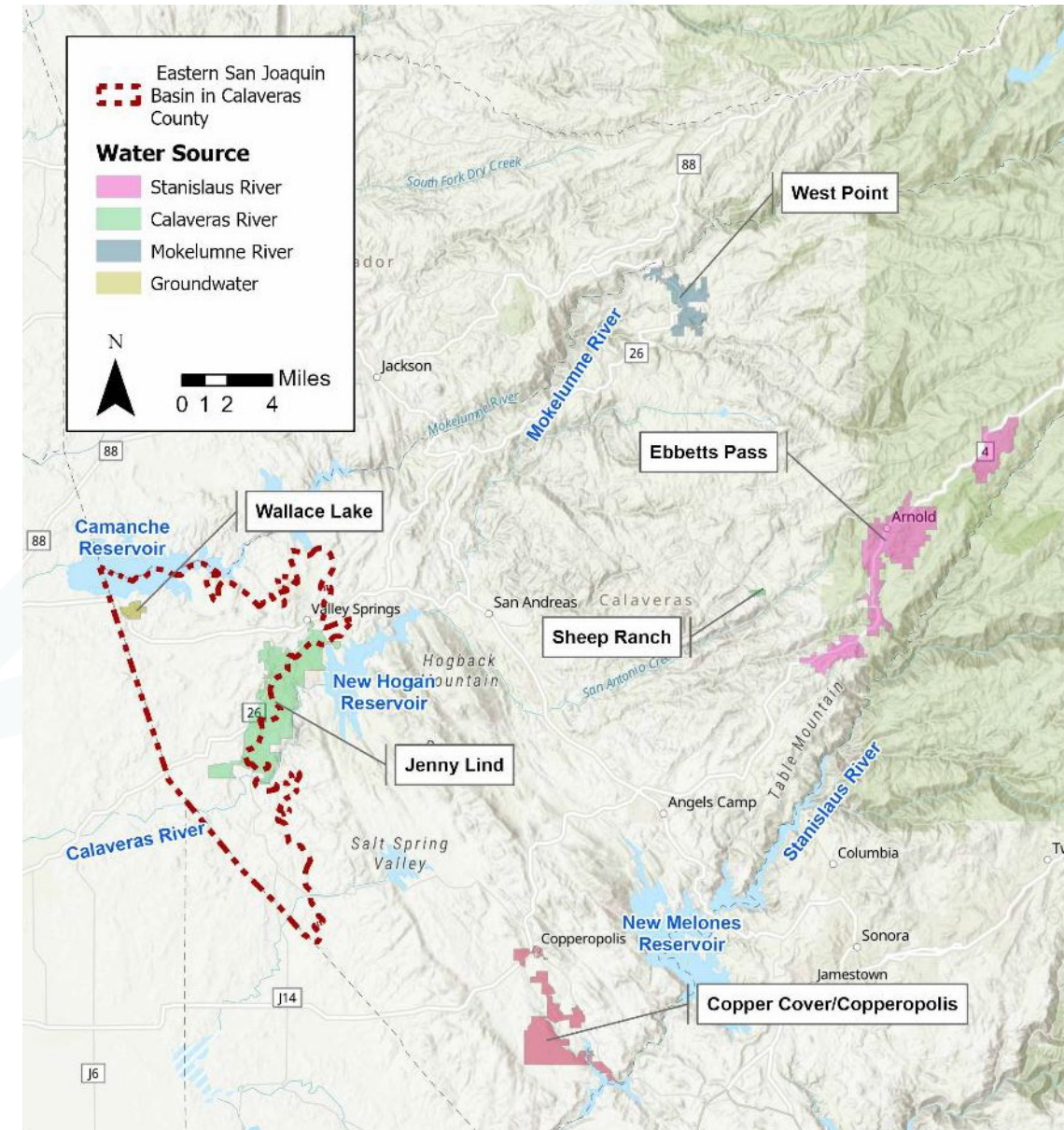
1. Introduction
2. Plan Preparation
3. System Description
4. Water Use
5. Baselines and Targets (SB X7-7)
6. System Supplies
7. Supply Reliability Assessment
8. Water Shortage Contingency Plan
9. Demand Management Measures
10. Adoption, Submittal, and Implementation

Public Outreach and Involvement Process

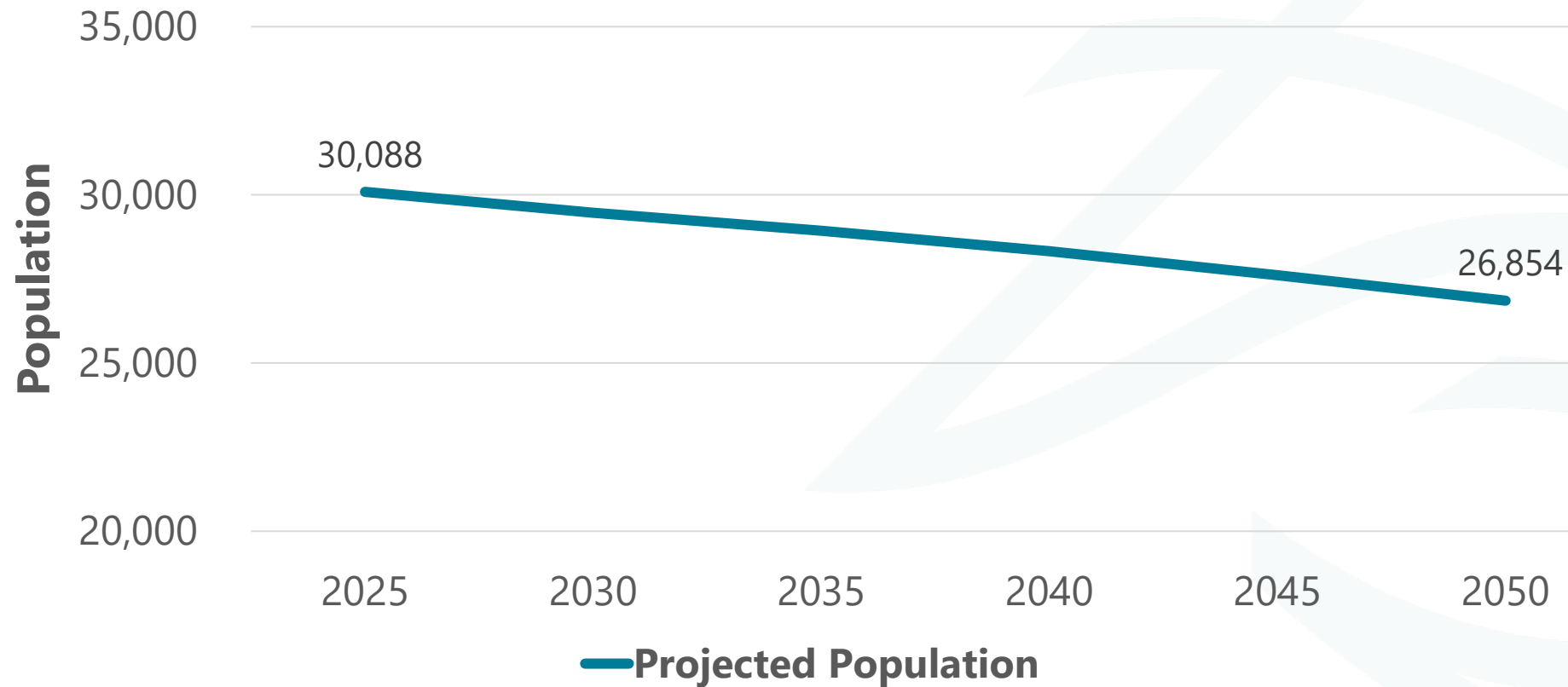


UWMP Considers Subregions

| Subregion | Water Source | Service Area |
|-----------|------------------|---|
| A | Calaveras River | Jenny Lind & Sheep Ranch |
| B | Stanislaus River | Ebbetts Pass & Copper Cove/ Copperopolis |
| C | Mokelumne River | West Point |
| D | Groundwater | Wallace |

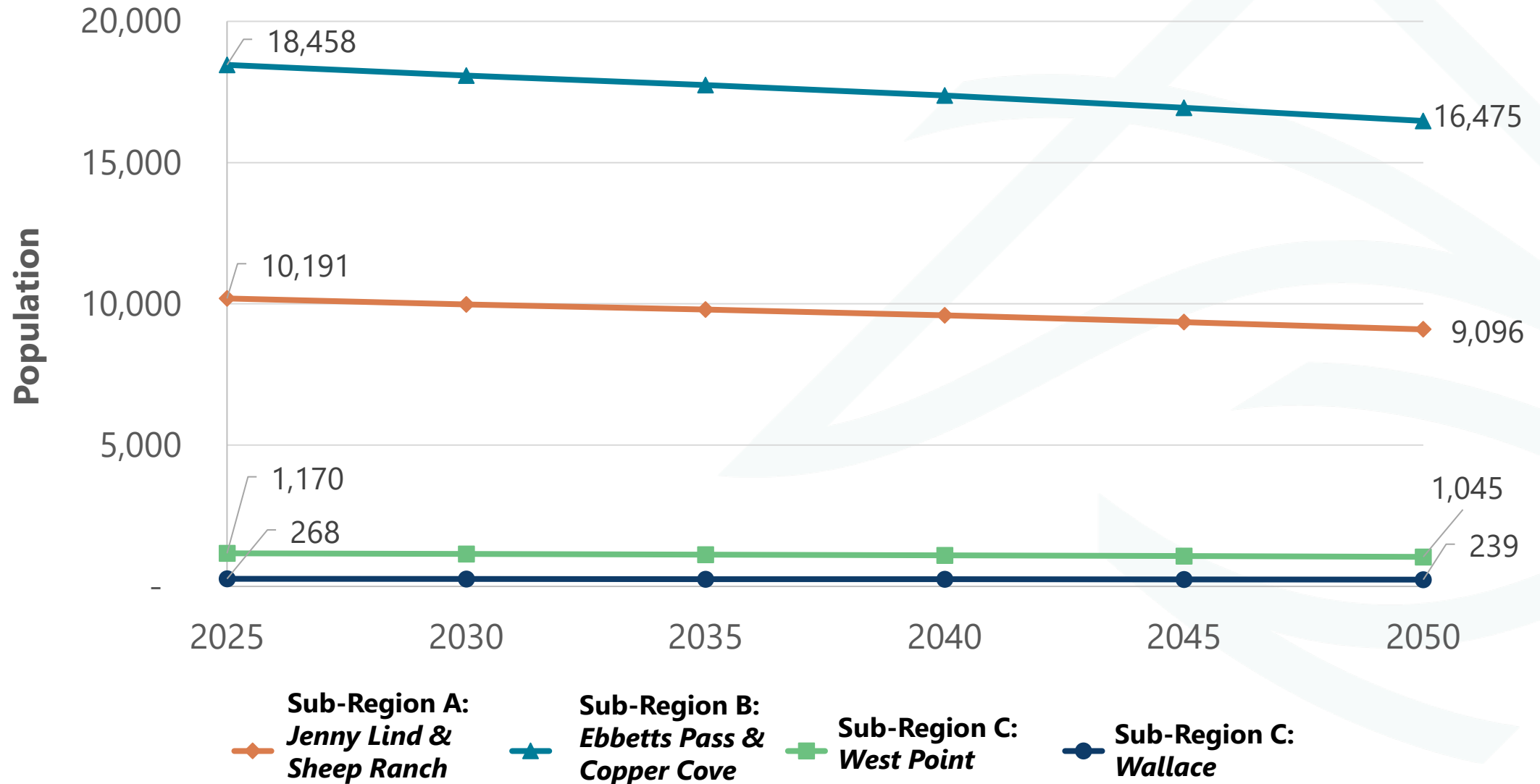


Population is Projected to Slightly Decrease

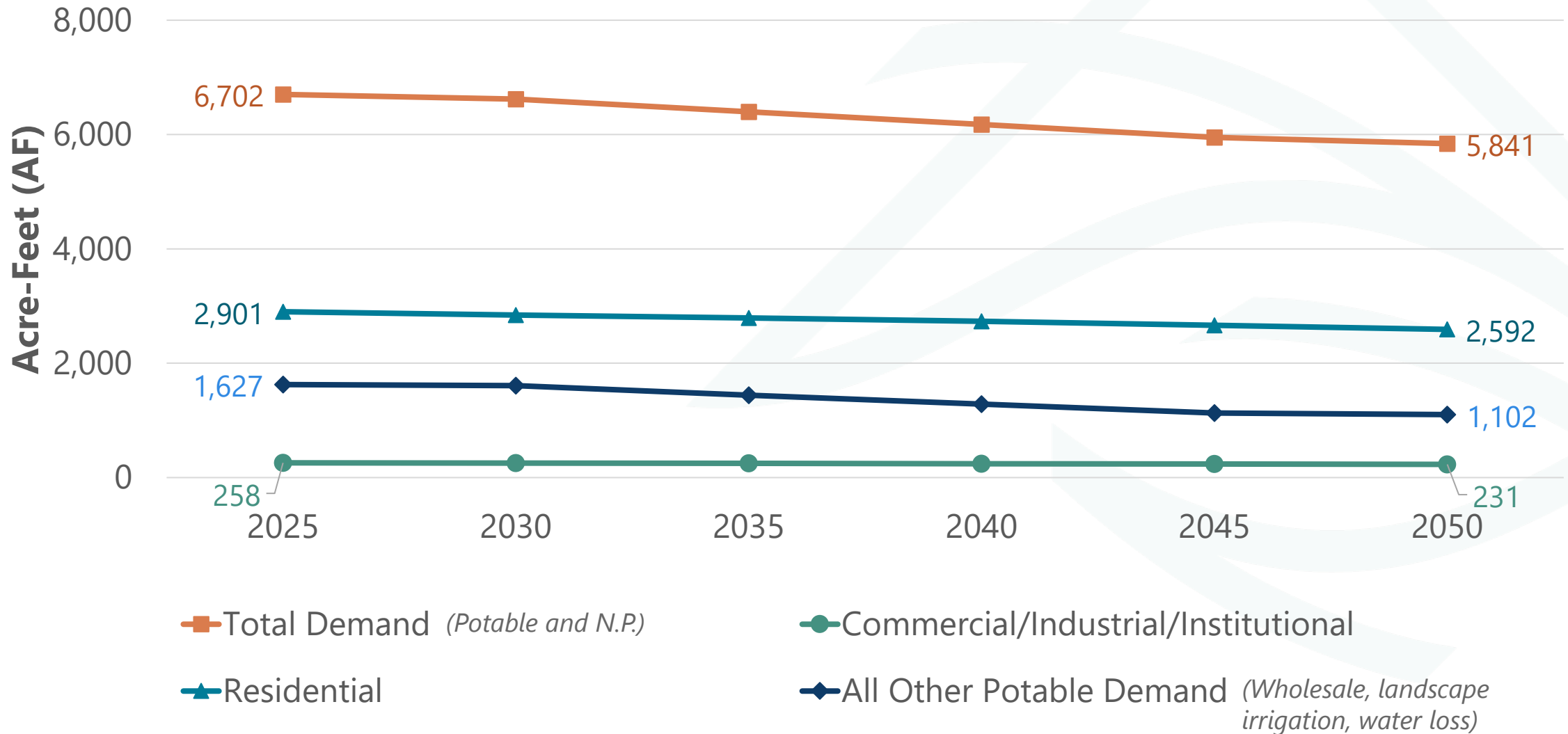


NOTE: These projections are derived from 2020 U.S. Census and Department of Finance data and are not reflective of projections that are included in the General Plan.

Population by Service Area



Similarly, Potable Demand is Expected to Decrease



Current Water Supplies Are Sufficient to Meet Future Demands

- CCWD can meet projected future demands for:
 - Normal Years
 - Single Dry Years
 - Five Consecutive Dry Years, with WSCP actions in Wallace

***District Wide
Reliability in a Single
Dry Year (Acre-Feet)***

| | 2030 | 2035 | 2040 | 2045 | 2050 |
|---------------|--------|--------|--------|--------|--------|
| Supply totals | 79,583 | 79,583 | 79,583 | 79,583 | 79,583 |
| Demand totals | 6,622 | 6,399 | 6,177 | 5,949 | 5,841 |
| Difference | 72,960 | 73,183 | 73,406 | 73,634 | 73,742 |

Current Water Supplies are Sufficient to Meet Future Demands

Service Area Reliability in a Single Dry Year (Acre-Feet)

Sub-Region A: Jenny Lind & Sheep Ranch

| | 2030 | 2035 | 2040 | 2045 | 2050 |
|-------------------|-------|-------|-------|-------|-------|
| Supply | 8,572 | 8,572 | 8,572 | 8,572 | 8,572 |
| Demand | 3,182 | 3,092 | 3,001 | 2,907 | 2,865 |
| Difference | 5,390 | 5,480 | 5,571 | 5,665 | 5,707 |

Sub-Region B: Ebbetts Pass & Copper

| | 2030 | 2035 | 2040 | 2045 | 2050 |
|-------------------|--------|--------|--------|--------|--------|
| Supply | 71,254 | 71,254 | 71,254 | 71,254 | 71,254 |
| Demand | 3,234 | 3,111 | 2,988 | 2,859 | 2,798 |
| Difference | 68,019 | 68,143 | 68,266 | 68,395 | 68,456 |

Sub-Region C: West Point

| | 2030 | 2035 | 2040 | 2045 | 2050 |
|-------------------|------|------|------|------|------|
| Supply | 200 | 200 | 200 | 200 | 200 |
| Demand | 144 | 139 | 134 | 129 | 126 |
| Difference | 56 | 61 | 66 | 71 | 74 |

Sub-Region D: Wallace

| | 2030 | 2035 | 2040 | 2045 | 2050 |
|-------------------|------|------|------|------|------|
| Supply | 45 | 45 | 45 | 45 | 45 |
| Demand | 62 | 58 | 54 | 54 | 52 |
| Difference | (17) | (13) | (9) | (9) | (7) |

Water Shortage Contingency Plan Includes Minor Edits, No Change in Technical Approach

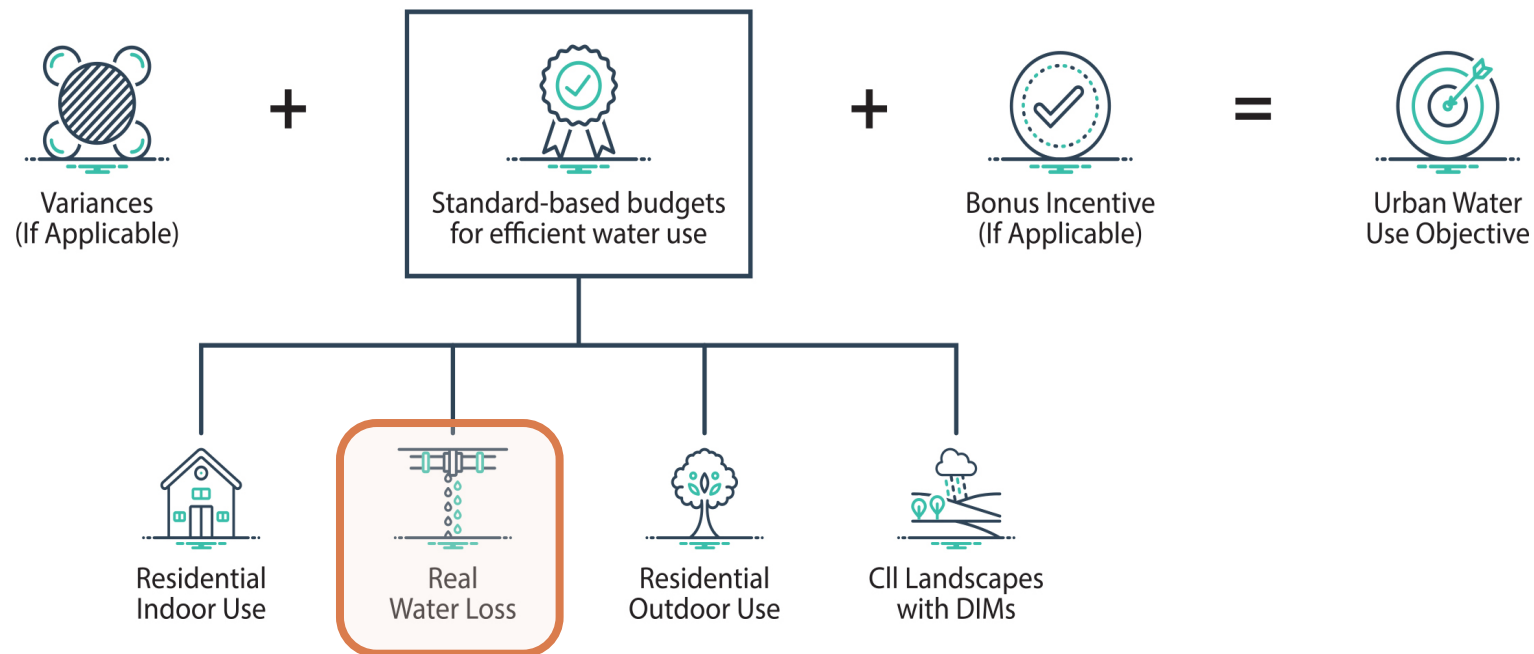
- Required aspect of the UWMP
- Outlines supply and demand management actions
- Was overhauled in 2020 to make implementation easier; worked well in 2021/22 drought

Six Shortage Levels (DWR Standard)

| Shortage Stage | Shortage Level |
|-------------------|----------------|
| 1 – Voluntary | ≤ 10% |
| 2 – Early Warning | ≤ 20% |
| 3 – Warning | ≤ 30% |
| 4 - Significant | ≤ 40% |
| 5 - Severe | ≤ 50% |
| 6 - Critical | > 50% |

District is Meeting the Urban Water Use Objective; Coming Up Short to Meet Water Loss Standards

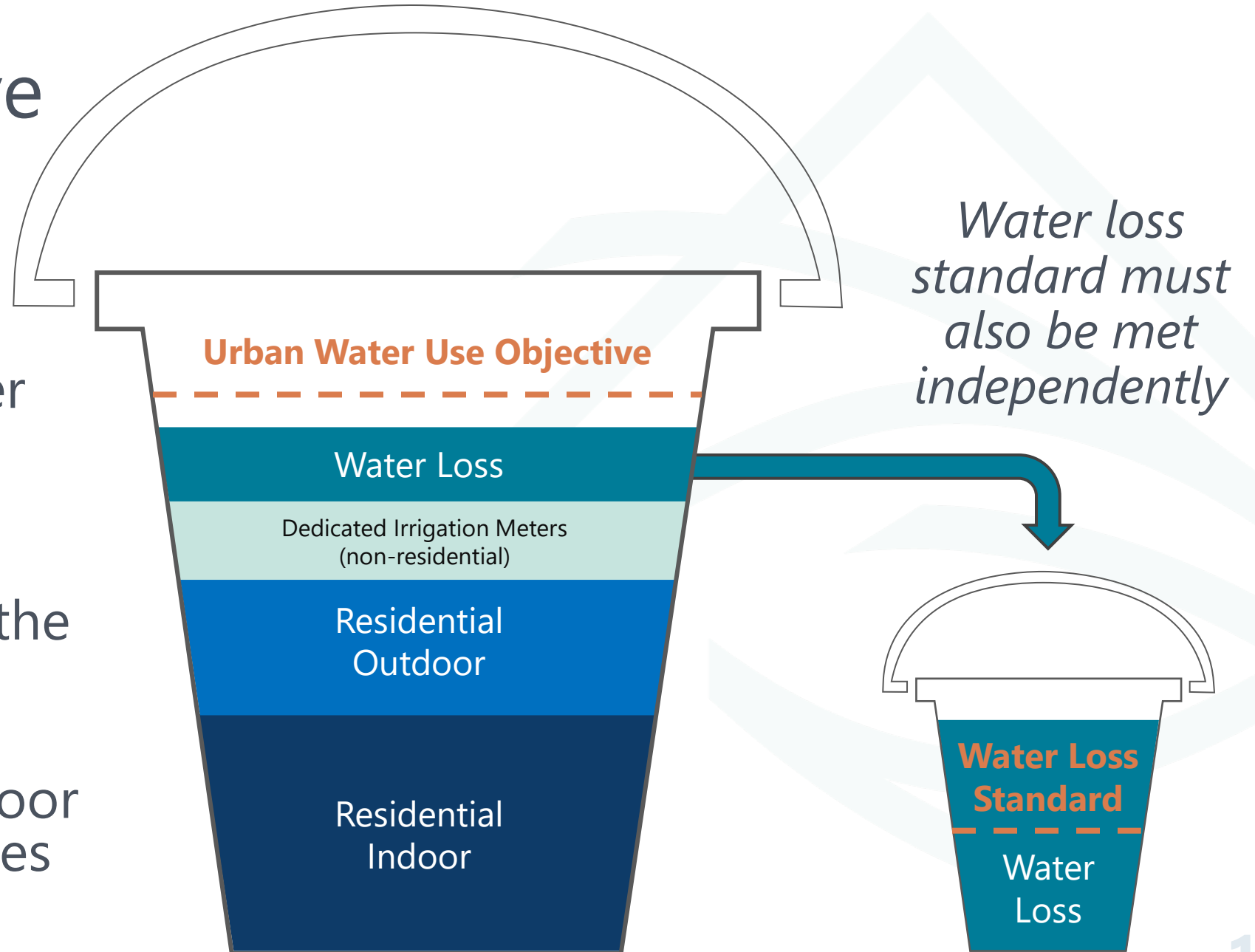
- Set by the State as part of Making Conservation a California Water of Life regulations
- Requires compliance by 2028; UWMP assumes compliance by 2040



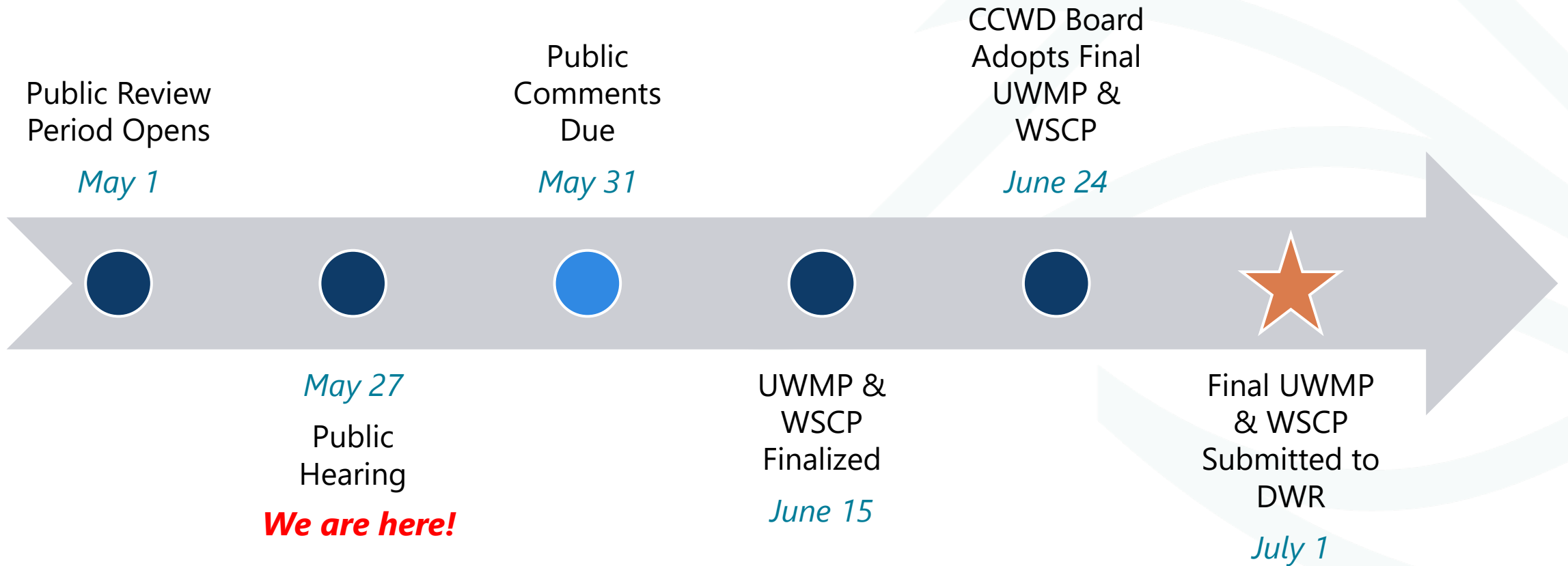
Graphic from California State Water Boards

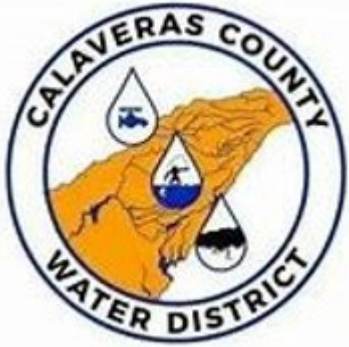
Urban Water Use Objective

- Compares certain categories of water use to efficiency standards
- Compliance is in aggregate across the agency
- Does not include agricultural or indoor non-residential uses



Schedule: Final UWMP & WSCP Due July 1





Questions